

# **EXHIBIT NO. 4**

RECORDED  
6/10/71  
par

FEDERAL BUREAU OF INVESTIGATION  
UNITED STATES DEPARTMENT OF JUSTICE

Laboratory Work Sheet

Re: UNKNOWN SUBJECTS;  
JEFFERY ROBERT MAC DONALD, COLETTE K.  
MAC DONALD, KIMBERLY MAC DONALD,  
KRISTEN MAC DONALD, VICTIMS;  
CRIME ON GOVERNMENT RESERVATION - MURDER

File # 70-51728-66  
Lab. # PC-F7279 JV

Examination requested by: Department of the Army CIDA-N let 6/7  
United States Army CID Agency  
Washington, D. C. 20315  
Examination requested: Date received: 6/10 per del  
Result of Examination: Mic (F) - Misc (other) Examination by: STOMBAUGH

Attn: Colonel Henry H. Tufts  
Commanding

Per del by Agent William Ivory on 6/10

Specimens submitted for examination

- Q1 Paring knife (G-82) (W-1)
  - Q2 Paring knife (G-82) (Y-1)
  - Q3 Ice pick (G-83) (X-1)
- KRISTEN*
- CLOTHING OF ~~KRISTEN~~ MAC DONALD
- Q4 Red and white pajama top (Y-2)
  - Q5 Red and white pajama bottom (Y-2)
  - Q6 Pair of child's panties (Y-2)
  - Q7 Child's undershirt (Y-2)

CLOTHING OF COLETTE MAC DONALD

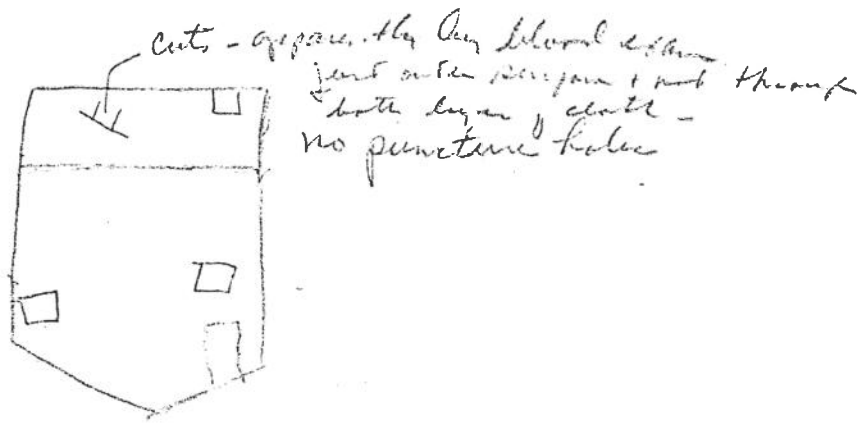
- Q8 Pajama bottom (Z-2)
- Q9 Pajama top (Z-2)

CLOTHING OF KIMBERLY MACDONALD

- Q10 Child's panties
- Q11 Child's nightgown
- Q12 Torn blue pajama top (A-3)
- Q13 Pocket allegedly from Q12 (R-3)

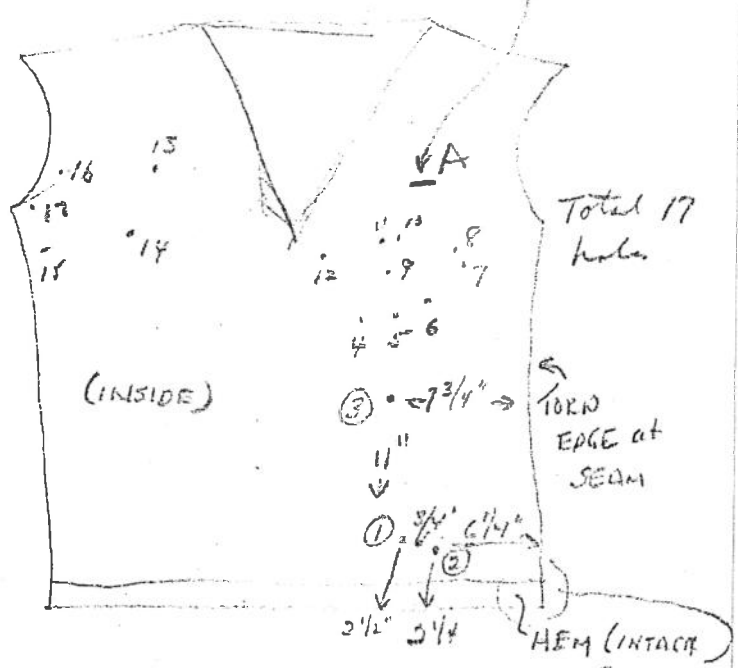
*Q10-11-12-13  
per del  
6/10/71*

Q13.



Q12 -

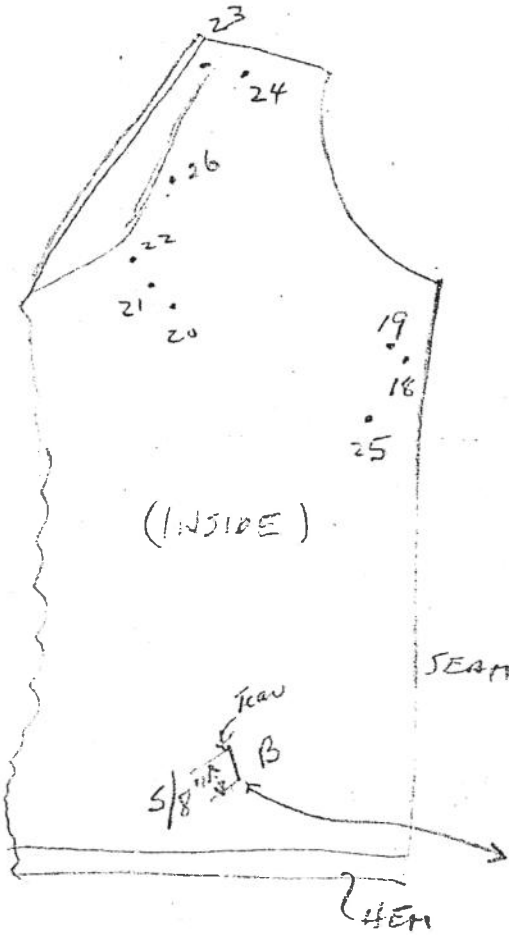
- 1 - outside → in
- 2 - ?
- 3 - inside → out
- 4 - ?
- 5 - cut → in
- 6 - inside → out
- 7 - ?
- 8 - ?
- 9 - inside → out
- 10 - ?
- 11 - ?
- 12 - outside → in
- 13 - ?
- 14 - inside → out
- 15 - ?



6-6 → I  
5-7 → O

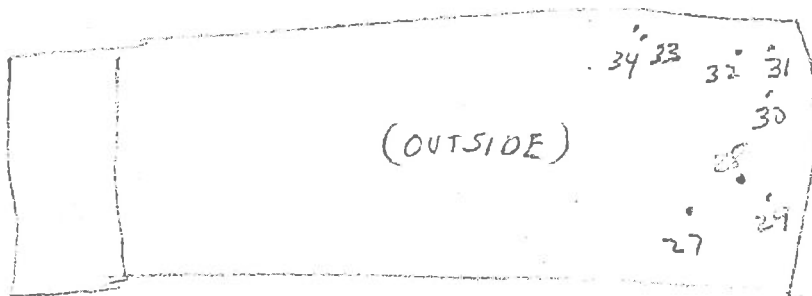
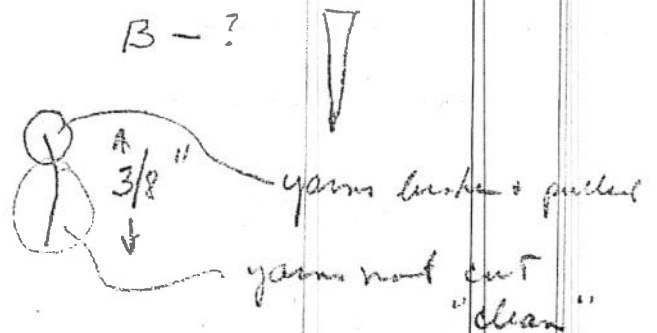
P12 (cont.)

PC-F7279

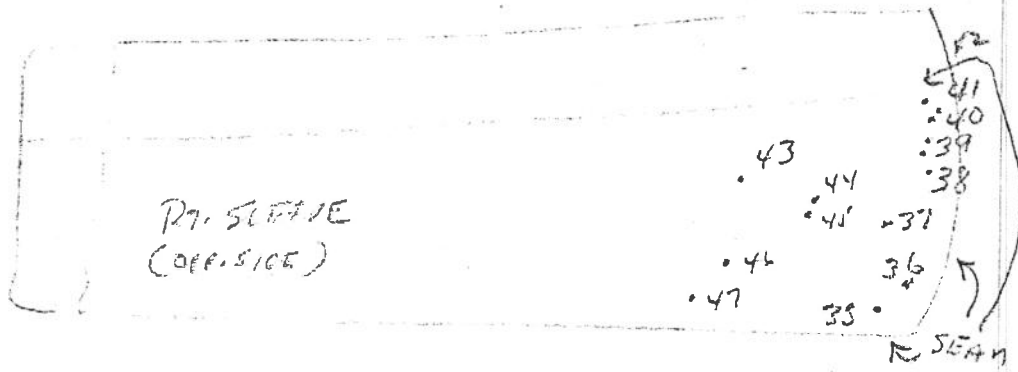


- 18 - ?
- 19 - ?
- 20 - Inside out
- 21 - outside → in
- 22 outside → in
- 23 - ?
- 24 - ?
- 25 - ?
- 26 - ?

B - ?

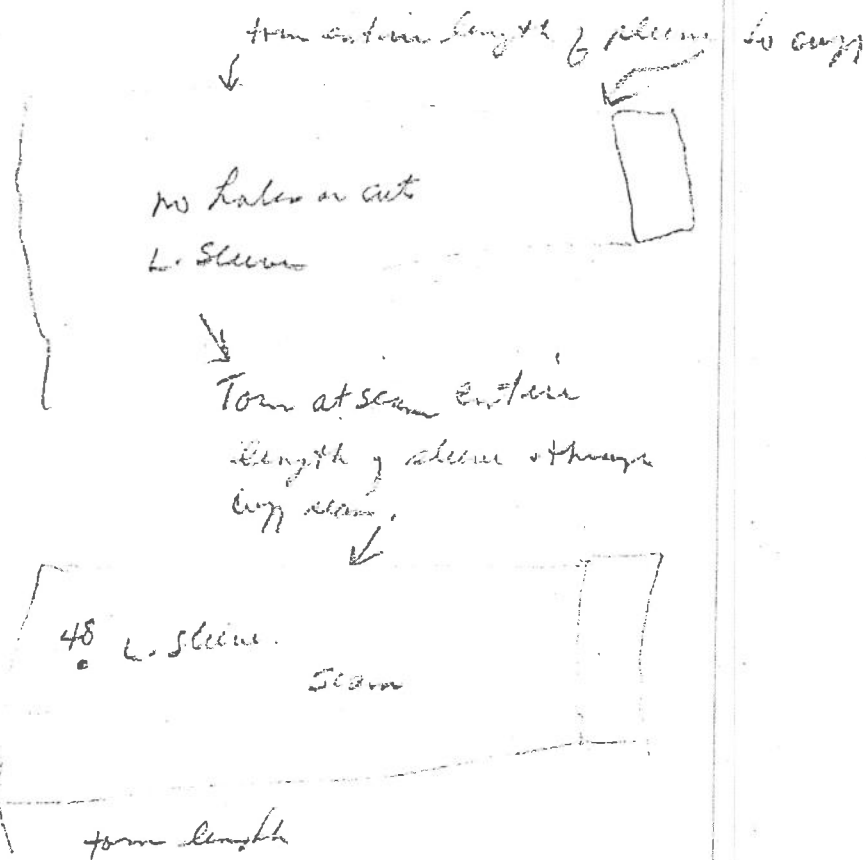


- 27 ?
- 28 ?
- 29 ?
- 30 ?
- 31 ?
- 32 ?
- 33 ?
- 34 ?



36 - outside → in } feet  
 37 - inside → out } feet

37-47 - (?)



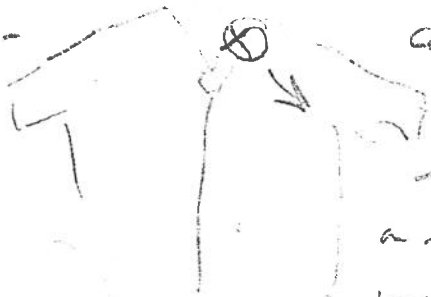
The perimeter like hole was slightly in dia. and was made by a sharp <sup>oval</sup> normal object such as an ice pick. Fact that there is no stain on any of the holes in P12 suggests P12 was stationary when hole made.

Further, some holes have been seen, approx. 7 inches hole from outside garment in white cotton hose opposite - inside out. Holes could have been made by several threads made at various points across. Unable to definitely state direction of thread due to fabric having been distorted + yarn present through handling of Q12.

Team of Q12 + Q13

Q13 pocket probably 1st to be torn by Q12 - red blood on blood on pocket comp. to large heavy stains on back + feet showing through blue art. so Q12 are not stained.

Team on Q12 include garment probably pulled from front left upper front -



causing tear down front and left sleeve + subsequent down left side seam. Blood stain on left side, front + sleeve area visible. Some blood stain on

adjacent part of front end, was some blood on garment prior to stain. After Team, large quantities put on garment.